



Enterprise Reporting Solution

Argos 6.12.1 Release Guide

Product version 6.12.1

Last updated 2/10/2025

Trademark, Publishing Statement, and Copyright Notice

© 1998-2025 Evisions. All rights reserved.

This software and related documentation are provided under a license agreement containing restrictions on use and disclosure and are protected by intellectual property laws. No part of this document may be reproduced, stored in or introduced into a retrieval system, or transmitted in any form or by any means (electronic, mechanical, photocopying, recording, or otherwise), or for any purpose, without the express written permission of Evisions.

The information contained herein is subject to change without notice and is not warranted to be error-free. Product features referenced herein for a period of time may not match product contents. Evisions does not warrant that the functions contained in the software will meet your requirements or that the operation of the software will be uninterrupted or error free. Evisions reserves the right to make changes and/or improvements in the software without notice at any time.

This software and documentation may provide access to or information on content, products, and services from third parties. Evisions and its affiliates are not responsible for and expressly disclaim all warranties of any kind with respect to third-party content, products, and services. Evisions and its affiliates will not be responsible for any loss, costs, or damages incurred due to your access to or use of third-party content, products, or services. Evisions does not endorse the content or developer of any products or web sites mentioned.

All information in this guide is designed for instructional purposes only. Evisions makes no guarantees regarding the accuracy or performance of any techniques used in this guide. Software configurations and environments may vary, and some techniques used in this guide may not operate efficiently under all configurations. This guide may contain examples of various technologies or products, which are the sole property and responsibility of their creators.

Trademarks are the property of the respective owners for any products mentioned herein.

Table of Contents

- What's New in Argos 6.12.1?** 4
 - MAPS and Argos Updates 4
 - Product versions 4
 - Installation 4
 - 1. Prepare test environment and ensure current backup 4
 - 2. Check for updates 4
 - 3. Allow update process to complete 5
 - 4. Verify the latest version is installed 5
- Argos 6.12.1 Release Notes** 6
- Getting Help** 8
 - Can't find what you're looking for? 8

What's New in Argos 6.12.1?

Evisions is pleased to announce the release of Argos version 6.12.1, which includes the following changes:

Argos Enhancements:

- Added a banner to the Argos Web Viewer containing the URL for Argos X.
- Additional resolved issues.

MAPS Enhancements:

- New Postgres data connection type.
- Update to the eLauncher to include Argos X launch button and header.
- Additional enhancements.

MAPS Resolved Issues:

- Resolved a few issues regarding failing API calls.
- Additional resolved issues.

We appreciate the feedback received from all of our users. Our products would not be what they are today without your continued support. If you have any comments or suggestions, please do not hesitate to [open a HelpDesk ticket](#) and let us know.

MAPS and Argos Updates

Some of the changes in this release require an update to MAPS as well as to Argos. We recommend upgrading both products to the latest versions concurrently.

Product versions

The latest versions of MAPS and Argos included in this release are:

- Argos mapplet 6.12.1.2145 / Argos client 6.12.1.2555 / Web Viewer 6.12.1.6
- MAPS service 6.12.1.2746 / MAPS Config 6.12.1.1542 / eLauncher 6.12.1.3 / MapsDBConfig 2.5.0.116 / Postgres XQP 1.0.0.16

Installation

1. Prepare test environment and ensure current backup

We highly recommend installing updates in a test environment before applying them to your production environment. You should make sure that a current backup is available in case of any unforeseen issues. To create a full backup of your MAPS environment, go to the **Server -> Backups** screen in MAPS and click **Backup Now**.

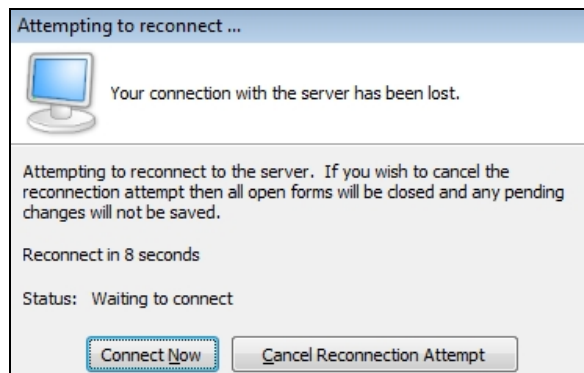
2. Check for updates

Click the **Check for Updates** button in the MAPS Config application to view available updates.

It is possible to apply updates when users are on the system; however, to avoid the possibility of losing unsaved work we recommend applying updates during off hours.

3. Allow update process to complete

When applying updates to the MAPS service you will be temporarily disconnected from the server:



The update process may take a few minutes to complete. **Do NOT cancel the reconnection attempt or manually restart the server.** You will automatically be reconnected to the server once the update has been applied.

4. Verify the latest version is installed

To ensure that you are on the most current version, continue clicking the **Check for Updates** button and applying the updates until no new updates are available.

Please Provide Us with Your Feedback!

As always, we welcome any [feedback or suggestions](#) you may have. We very much appreciate your thoughts and suggestions, so please keep the great ideas coming!

Argos 6.12.1 Release Notes

Argos Mapplet 6.12.1.2145 / Argos Client 6.12.1.2555 / Web Viewer 6.12.1.6
MAPS Service 6.12.1.2746 / MAPS Config 6.12.1.1542 / eLauncher 6.12.1.3

Argos

Enhancements

Area	Description	Issue number
AWV	Added an announcement banner to the Web Viewer containing the URL for Argos X.	AR-8151

Resolved Issues

Area	Description	Issue number
AWV	The Content Pane pop-up in the Web Viewer was shifting out of position depending on the number of items in a folder.	AR-6296
AWV	Data Aware objects in a multi-column list box were failing to update when edit boxes used as a parameter within the list box were set to 'Not Required' in the properties menu.	AR-8131
AWV	Using Ctrl+A on MacOS to select the value in a list box would instead select everything on screen except the list box value.	AR-8130
AWV	CSV files that were imported to a multi-column list box were unable to be referenced by other dashboard objects in the Web Viewer.	AR-8111
Reporting	Report Queries tested against a MEMO field were unexpectedly returning 'WIDEMEMO' as a result in some fields.	AR-8110

Enhancements

Area	Description	Issue number
Database	Updated the MAPS Database Configuration utility to support MAPS and Argos 6.12.1.	MAPS-3765
Data Connections	Added a new Postgres Data Connection.	MAPS-3008
eLauncher	Added an launch button for Argos X to the Argos Header in the eLauncher.	MAPS-3736
SAML	Single Sign-On authentication tokens now store the session ID.	MAPS-3716

Resolved Issues

Area	Description	Issue number
API	Certain API calls were failing due to cookie session IDs being read instead of session IDs.	MAPS-3729
API	Some API calls were failing to communicate between endpoints due to the Access-Control-Allow-Origins response header returning unexpected results.	MAPS-3728
Data Connections	Data connections were unable to be created when a session's associated application was marked as <Unknown>.	MAPS-3741

Getting Help

For information on using the software, please refer to the product Help, which contains detailed information on all aspects of the product.

If you are having problems with the installation or configuration, you can search our [support site](#), which includes a knowledge base of common issues. If you are unable to find the solution, submit a HelpDesk request with a detailed explanation of the problem you are experiencing.

Please do not hesitate to contact the Evisions HelpDesk if any questions or problems arise. We are here to help you and want to ensure your success.

Can't find what you're looking for?

We would love to make our documentation better! If you have a moment to let us know what we missed or how we can make the help more useful, please email us at TechDocs@evisions.com.